



 eifeler

ARDURO[®]

Reach the summit of impossibility
in hard machining

YOUR CHALLENGE: HARD MACHINING WITHOUT MARGIN FOR ERROR

Manufacturers today face increasing pressure to reduce costs while maintaining high productivity and quality. Tool wear, unexpected downtime, and frequent tool replacements create significant expenses and disrupt operations.

For hard machining applications, these challenges intensify. Machining steels above 55 HRC exposes cutting tools to extreme heat, abrasive wear, and mechanical stress, which quickly degrade performance and shorten tool life.

THAT'S WHERE ARDURO® STEPS IN

Developed for the toughest jobs in hard machining, ARDURO® is a next-generation Arc-PVD coating optimized for dry and high-speed operations.

- » 20-50% performance gain in benchmark cutting tests
- » Increased tool life, fewer replacements
- » Superior chip control and wear protection
- » Exceptional oxidation resistance (up to 1,100°C)
- » Sustainable cost-efficiency across the tool's lifetime

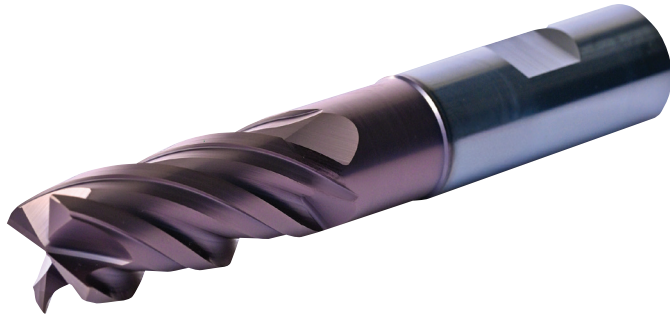
Additionally, ARDURO®'s surface finish optimizes chip flow and prevents chip adhesion, reducing the risk of built-up edges and improving process stability. The surface quality of the coating prevents the need for post-polishing in most cases, which makes ARDURO® also an ideal coating for micro tools.



OPTIMIZED FOR PERFORMANCE AND COST EFFICIENCY

ARDURO® offers a combination of technical advantages that translate directly into operational benefits:

- » **Tailor-made layer architecture** engineered to reduce thermal conduction to the substrate and resist mechanical and thermal stresses encountered during hard machining.
- » **Optimized and reproducible coating thickness** ensures reliable coverage across complex geometries and micro tools, supporting consistent tool performance.
- » **Refined surface finish** reduces frictional forces and avoids chip sticking, improving machining stability.
- » **High oxidation resistance** maintains coating integrity at temperatures up to 1,100°C, even in dry, high-speed operations.
- » **Controlled residual stress** enhances coating adhesion and durability for longer tool life.
- » **Reconditioning capability** enables multiple recoating cycles, reducing tooling costs and waste.
- » **Uniform surface appearance** - no color shading - signaling quality, consistency, and trust.



COATING PROPERTIES

Coating composition	AlTiSiN-based
Hardness H_{IT}	31 ± 3 GPa (~ 3,200 HV _{IT})
Coating thickness	
Standard (Tools $\varnothing \geq 3$ mm)	2.5 ± 0.5 μ m
Thin (Tools $\varnothing 1 - 3$ mm)	1.5 ± 0.3 μ m
Micro (Tools $\varnothing < 1$ mm)	0.8 ± 0.2 μ m
Maximum operating temperature	1,100 °C / 2,012 °F
Roughness on polished surfaces	0.02 ± 0.01 μ m
Residual stress	-3 ± 1 GPa
Color	Caramel bronze

APPLICATION RANGE

- » Endmills, micro tools, twist drills and taps.
- » **Machining of:**
 - » Hardened tool steels (>55 HRC)
 - » Nickel-based alloys
 - » Titanium alloys
 - » Cast iron

Unlock your hard machining potential with ARDURO® and the dedicated service only eifeler provides.

Speak with our experts to learn how ARDURO® can meet your toughest machining challenges.

eifeler – Serving with care. Coating with excellence.



Locations:

voestalpine eifeler Coating GmbH

Werk Düsseldorf

Duderstädter Straße 14
40595 Düsseldorf
T. +49 / 211 / 970 76-0
duesseldorf@eifeler.com

Werk Ettlingen

Englerstraße 18a
76275 Ettlingen
T. +49 / 7243 / 57 78-0
ettlingen@eifeler.com

Werk Schnaittach

Kirschenleite 10–12
91220 Schnaittach
T. +49 / 9153 / 92 27-0
schnaittach@eifeler.com

Werk Salzgitter

Gottfried-Linke-Straße 205
38239 Salzgitter
T. +49 / 5341 / 22 32-0
salzgitter@eifeler.com

voestalpine eifeler Vacotec GmbH

Düsseldorf

Hansaallee 321
40549 Düsseldorf
T. +49 / 211 / 522-2400
info@eifeler-vacotec.com

USA - voestalpine High Performance Metals LLC

Illinois

2475 Millennium Drive
Elgin, IL 60124
T. +1 (630) 587-1220
sales.usa@eifeler.com

California

20492 Carrey Road
Walnut, CA 91789
T. +1 (909) 594-5751
sales.usa@eifeler.com

Michigan

2222 Spikes Lane
Lansing, MI 48906
T. +1 (517) 708-7945
F. +1 (517) 913-6279
sales.usa@eifeler.com

Mississippi

11175 MS 178
Olive Branch, MS 38654
T. +1 (662) 932-8094
sales.usa@eifeler.com

Ohio

18687B Sheldon Road
Middleburg Heights, OH 44130
T. +1 (216) 658-3870
F. +1 (216) 658-3871
sales.usa@eifeler.com

Tennessee

3450 Old Tasso Road NE
Cleveland, TN 37312
T. +1 (423) 790-7382
F. +1 (423) 790-7386
sales.usa@eifeler.com

More coating centers located
in Canada, China, Denmark,
France, Hungary, India, Mexico,
Poland, Switzerland and Taiwan.

www.eifeler.com



voestalpine eifeler Unternehmensgruppe

Duderstädter Straße 14
40595 Düsseldorf
T. +49 / 211 / 970 76-0
F. +49 / 211 / 970 76-955
www.eifeler.com

voestalpine

ONE STEP AHEAD.